

General Notes:

Addendum #1 represents the reports and attachments related to soils, layout of parking lots, geohazard reports etc.

In addition to this you have a separate listing of PG&E reports for 15 min incremental data that was pulled off our PGE Interval Dashboard.

This list represents addendum #2. Signature at the bottom of this addendum will represent acceptance of all posted documents, attachments and RFI questions.

- 1) What is the basis for the 2,000,000 kWh target for each of the campuses as opposed to offsetting the residual load at each site or XX% of the residual load which would provide better long-term savings for the District (especially with ToU grandfathering)?

A: The District is looking to achieve the aggregate of 80-85% of the current load of both campuses combined. So if one site is 95% and the other is 75% the average of the 2 sites should equal 80-85% of the current residual load.

- 2) Given the District has passed a bond measure and has access to CREBs funding, is there some flexibility to the \$6.5 Million budget limitation to drive additional General Fund and long-term NPV savings for the District?

A: Possibly, but any flexibility to the \$6.5 Million budget will be determined after the award and what this exactly entails.

- 3) Have geotech surveys been completed on both campuses where the arrays will be located?

A: Some soil samples have been collected from when the District did the geothermal installation at both campuses and will be provided in an addendum to be issued by Thursday April 27, 2017.

- 4) Were the interconnection applications submitted before January 31st for both sites? If so, what is their current status?

A: Yes, both applications for the Kentfield Campus and the Indian Valley Campus were submitted prior to January 31, 2017. Both applications are still valid.

- 5) Will there need to be a public comment and approval process for cutting trees at Kentfield and IVC?

A: No.

- 6) What is the metering arrangement and rate tariff of the solar array for the swimming pool at Kentfield?

A: Unknown, but the information will be included in the addendum for 4/27/2017.

- 7) Will the District be able to provide 15-minute utility consumption data for the main meters at Kentfield and IVC?

A: Yes.

- 8) Have PG&E interconnection applications been submitted? If so, please provide copies.

A: See answer to #4. Copies of the interconnection applications will be provided in an addendum to be issued by Thursday April 27, 2017.

- 9) What performance guarantee (%) is the District intending for the contractors to make?

A: The District is expecting performance guarantees at each site to be 90% or greater of the rated AC output in the first year of operation (the ideal target performance guarantee in the first year of operation is 95%), with subsequent year performance guarantees adjusted for annual degradation no greater than 0.75% degradation loss per year.

- 10) If audited financial statements are submitted as "confidential", please confirm that they will remain private and not be released publicly.

A: These will not be released publicly.

- 11) Please provide one-line diagrams for the Tesla batteries. (Are they on the same meters as the PV system, or separate?)

A: Tesla Batteries have no bearing or part of this project.

- 12) Please provide one-line diagrams for the 1200A and 1600A panelboards.

A: [insert]

- 13) Please provide current load information for the PV meters. We will need this in order to provide the requested savings analysis.

Please see PowerPoint presentation included in attachments for this information

- 14) Who prepared the CREBS application?

A: District staff with support from tax counsel and financial advisor prepared the CREBS application, which has been submitted.

- 15) Who submitted the Interconnection Application? Can we see the application to verify our proposed design complies with the Interconnection App?

A: The District submitted the Interconnection Application. The application will be supplied in addendum for 4/27/2017.

16) What geo-technical reports does the college currently have and can we review those?

A: See answer #3.

17) Can you confirm this is prevailing wage?

A: Yes, California state law requires prevailing wages for public projects

18) What utility upgrade costs should bidders assume?

A: Vendors should assume the District will pay for permanent utility upgrade costs required by the contract documents.

19) Can you provide the interval usage data for all the meters in order to provide the most marginal cost savings analysis?

A: See answer to #7.

20) If interval data is not available, can we get billing or overall information about the current usage on each campus?

A: Billing information is available but we will provide interval data.

21) How many parking spaces will be made available at any given time during construction?

A: This will be worked out with awarded vendor during logistics by site location.

22) Is this in a CGS Geohazard zone?

A: Yes, both campuses sit on a landslide and tsunami geohazard zone as defined by CGS

23) Are interviews really going to be the Monday following the Friday proposal submittal?

A: "At District's Option."

24) 14' requirements at Kentfield will require additional DSA approval timeline because there are no 14' DSA Pre-check designs. If the College needs 14' heights then this site will not hit the TOU grandfathering deadline. Is the priority the TOU grandfathering or for the 14' heights?

A: Priority is not for the 14 foot heights but the priority is for the pre-check designs.

25) Does the district have any other technical requirements?

The PV's should have a life expectancy of 25 years

26) How many total hours of technical support does the district expect over the first 5 years? How many hours in the first year is the contractor expected to provide to work with the district staff to create the new curriculum?

A: 40 hours of technical support for first year. Curriculum is undecided at this point because this process extends beyond one year.

27) Please let us know what the Total Usage and Total Anticipated Usage at the bottom of the "Rates-Solar Project" sheet refers to.

A: See attachment posted online , listed as "attachment"

28) Has the District already applied for CREBs funding? If yes, please let us know the CREBs allocation for each College and the expiry date.

A: Yes, see answer to #14. The District has not yet received an allocation.

29) It is our understanding that the District has already filed a preliminary interconnection application with PG&E for the solar projects to grandfather into the existing TOU rates. Would you please let us know the system size at each College in the interconnection application?

Or, please provide a copy of the interconnection application for each college.

A: See answer to #15.

30) Please provide a completed Table 3.2.

A: See attachment A in the online posting.

31) In Section 3.3, the District is requiring a savings analysis to show compliance with Government Code Section 4217.12. In the absence of detailed utility data (monthly and interval data) for each meter at site, we cannot perform this analysis. Due to the very short time given to us to respond, will the District be okay with having this analysis done by the selected contractor?

A: Yes the District is ok with this methodology.

32) Please clarify what you mean by, "Referring to the detailed project schedule attached as Exhibit D" in Section 7.4. There is no schedule attached as Exhibit D.

A: The reference to Exhibit D is an error. The project schedule requires compliance with ToU grandfathering requirements by December 15, 2017.

33) Please provide the number of hours in Section 7.11.

A: See answer to #26

34) Please provide a map showing all the meter locations for both the campuses.

A: Available soils reports will included in the addendum for 4/27/2017.

35) Please provide a soils report for each one of the Colleges.

A: Available soils reports will included in the addendum for 4/27/2017.

36) Please confirm the minimum height of the solar canopy at Parking Lot P-1 at Kentfield Campus

A: See answer to # 24

37) Please confirm that the District will remove/trim trees that affect the construction or the performance of the solar project at both campuses.

A: Confirmed.

38) Please confirm that the District will be responsible for all ADA compliance as it relates to the solar project.

A: Incorrect: ADA compliance is the responsibility of the awarded vendor as it relates to the work, constriction and services being delivered to the District.

39) Please confirm if there is a spare conduit and the size of the conduit across the creek at the Indian Valley campus.

A: Yes, 4 inches.

40) Please clarify the project bonding, insurance, and labor requirements.

A: The project is submit to bonding and labor requirements as a public project. Insurance requirements may be found in section 6.9 of the RFQ/P.

41) The quality assurance requirements, 6-sigma, ISO 9001, 5S, etc, is typically geared towards manufacturing of products, panels and inverters. How can we respond to this question or score the full 5 points if the general contractor is not a manufacturer of a product?

A: 6-sigma, ISO 9001, 5S are examples of quality assurance programs/models. Vendors may respond based on other QA programs/models, internal and external to the vendor, e.g., the Associated General Designer/Builders of America.

42) Please provide renewable energy curricula hours of technical support and with district staff to create the new curriculum.

A: See # 26.

43) How is the system performance verification and monitoring going to be judged, to score the full 25 points?

A: Please refer to section 7.6 of the RFQ/P. System performance and verification and monitoring will be scored based on the completeness of responding to section 7.6.

Acknowledge receipt of this addendum by signing and submitting along with your Bid submittal which is due prior to 3:00pm on May 5, 2017 to

Mayra Ramirez, Buyer (Measure B Bond),
1800 Ignacio Blvd. Novato, CA 94949.

Name of Company: __ _ _____

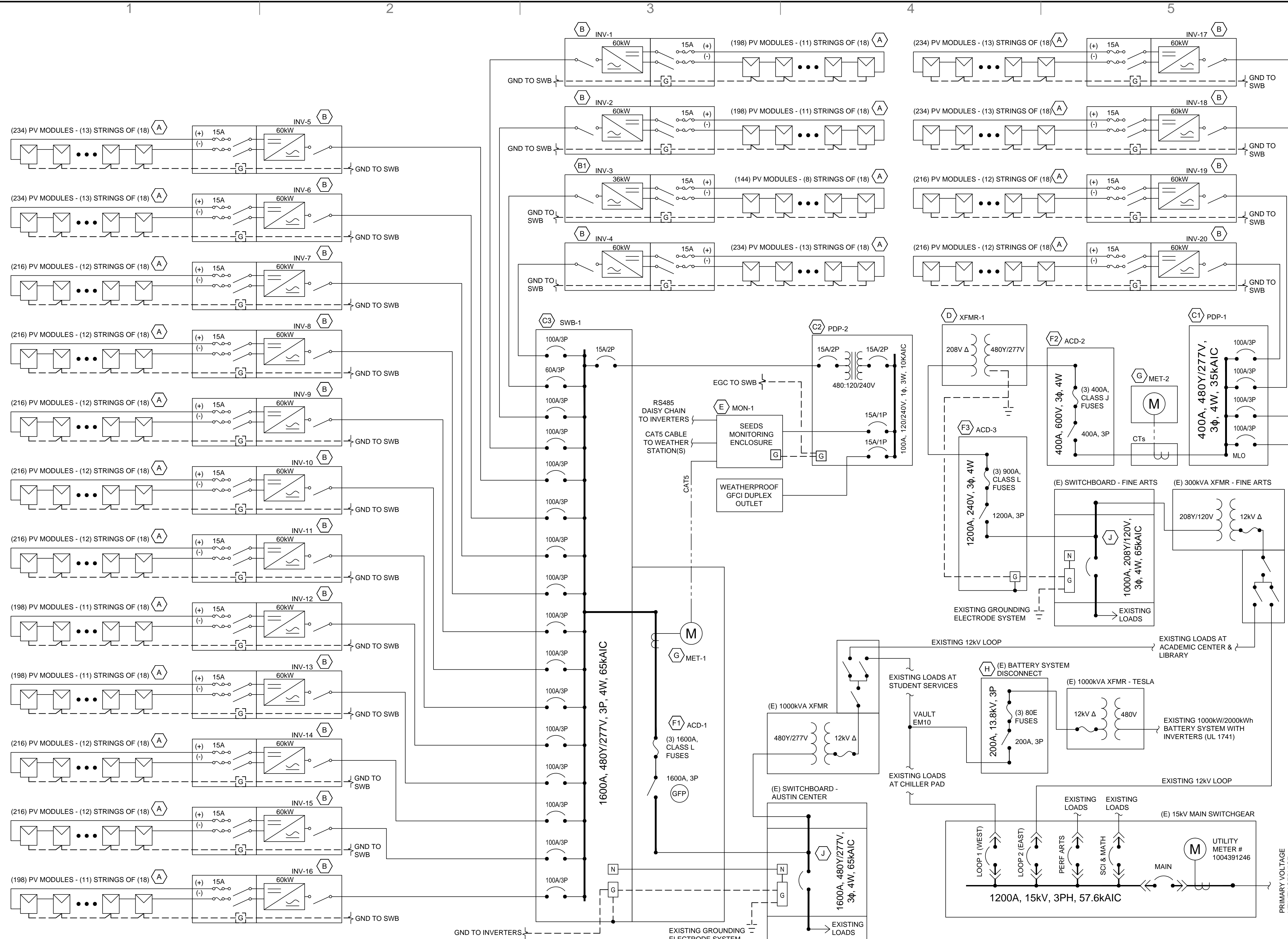
Signature of Individual authorized to sign for company: _____

Name Printed: __ _ _____

Date: _____

c:\Users\dmeyer\Box Sync\dmeyer@sunedison.com\ca-16-0162_college of marin\5.0 Electrical\E-201 SINGLE-LINE DIAGRAM.dwg

Printed: 1/25/2017 7:46 PM



SYSTEM DESCRIPTION	
MODULE	(4248) SUNEDISON F335E2D-3Y MODULES
SYSTEM SIZE (DC)	1423.080 kW
SYSTEM SIZE (AC)	1176.0 kW, (CEC RATING = 1,278.078 kW)
INVERTERS	(19) SUNGROW SG60KU-M, 60 kW & (1) SUNGROW SG36KU, 36kW
TRANSFORMER	(1) 300 KVA kVA STEP-DOWN, DRY TYPE

PV MODULE SPECIFICATIONS	
MANUFACTURER	SUNEDISON
MODEL NUMBER	F335E2D-3Y
MODULES PER STRING	18
Imp OPERATING CURRENT	8.85 A
Vmp OPERATING VOLTAGE	37.9 V
Isc SHORT CIRCUIT CURRENT	9.29 A
Voc OPEN CIRCUIT VOLTAGE	46.4 V
MAX. SYSTEM VOLTAGE	1000 V
MAX. SERIES FUSE (OCPD)	15 A
MAX. POWER (DC STC)	335 W
NOMINAL POWER (DC PTC)	305.5 W
Voc TEMP COEFFICIENT	-0.31 %/°C

MAXIMUM VOLTAGE (NEC 690.7)	
MODULES PER STRING	18
MODULE Voc	46.4 V
TEMPERATURE COEFFICIENT	-0.31 %/°C
LOW TEMP. (ASHRAE)	-3°C
*MAX. VOLTAGE	907.7 V
#MODULES x (VOC + TCOEF x VOC x (TLOW-25))	

INVERTER SPECIFICATIONS		
MANUFACTURER	SUNGROW	SUNGROW
MODEL NAME	SG60KU-M	SG36KU
MAX. DC VOLTAGE RATING	1000V	1000V
MAX DC INPUT CURRENT	192A	120A
MAX. DC Isc	200A	120A
MAX. POWER AT MAX. TEMP.	60KW	36KW
NOMINAL AC VOLTAGE	480V	480V
AC VOLTAGE RANGE	422-528V	422-528V
MAX. BACKFEED AC CURRENT	80A	48A
OCPD RATING	100A	60A
CEC EFFICIENCY (CALIFORNIA ONLY)	98.5%	98%
WIRE CONFIGURATION	4W/3PH	4W/3PH
ENCLOSURE RATING	NEMA 4X	NEMA 4X
HARMONIC DISTORTION	<3%	<3%
FREQUENCY RANGE	55-65HZ	57-63HZ
GROUNDING CONDUCTOR	UNGROUND	UNGROUND

EQUIPMENT SCHEDULE - KEYNOTES	
A	SUNEDISON SE-F335E2D-3Y MODULES INCLUDE 1KV OUTDOOR RATED QUICK CONNECTS FOR MODULE STRING CONNECTIONS. DO NOT REMOVE QUICK CONNECTS. FIELD INSTALLED CONNECTOR MANUFACTURER AND PART NUMBER MUST MATCH EXACTLY THE CONNECTORS SUPPLIED BY THE FACTORY.
B	SUNGROW SG60KU-M, 60kW UTILITY INTERACTIVE PHOTOVOLTAIC INVERTER WITH ARC FAULT DETECTION & GFDI. LISTED TO UL 1741 AND UL 1699B. REFERENCE INVERTER MANUAL FOR MORE INFORMATION AND INSTALLATION INSTRUCTIONS.
B1	SUNGROW SG36KU, 36kW UTILITY INTERACTIVE PHOTOVOLTAIC INVERTER WITH ARC FAULT DETECTION & GFDI. LISTED TO UL 1741 AND UL 1699B. REFERENCE INVERTER MANUAL FOR MORE INFORMATION AND INSTALLATION INSTRUCTIONS.
C1	A/C COLLECTION PANEL - PDP-1 400A MLO, 480V, 3PH, 4W, 35KAIC FULLY RATED AC DISTRIBUTION PANEL. NEMA 3R.
C2	MINI POWER CENTER - PDP-2 100A, 600VAC, 1PH WITH 3KVA, 480/240/120V TRANSFORMER. NEMA 3R.
C3	PV SYSTEM SWITCHBOARD - SWB-1 1600A, 480V, 3P, 4W, 65KAIC, 1600A FUSIBLE MAIN DISCONNECT SWITCH W/ GFP. NEMA 3R.

EQUIPMENT SCHEDULE - KEYNOTES (CONT.)	
D	TRANSFORMER - XFMR 1 300KVA, 480Y/277V TO 208V DELTA, DRY TYPE, PAD MOUNTED TRANSFORMER. GROUND PER NEC §250 & MANUFACTURER'S WRITTEN INSTRUCTIONS.
E	SEEDS COMMUNICATION SYSTEM COMPONENTS FURNISHED BY SUNEDISON. INSTALLED BY CONTRACTOR. SEE ELECTRICAL INSTRUMENTATION SHEETS FOR MORE DETAILS.
F1	PV SYSTEM UTILITY DISCONNECT - ACD 1 1600A, 480Y/277V, 3P, AC DISCONNECT, FUSIBLE, NEMA 3R. RATINGS OF 1000A OR GREATER AND PHASE TO GROUND GREATER THAN 150V SHALL HAVE GROUND FAULT PROTECTION. BOLT SWITCH MODEL # VL369G6.
F2	PV SYSTEM UTILITY DISCONNECT: ACD-2 400A, 600V, 3P, AC DISCONNECT, FUSIBLE, NEMA 3R. PV SYSTEM UTILITY DISCONNECT LOCATED NEAR POCC. EATON/CUTLER HAMMER DH365NRK.
F3	PV SYSTEM UTILITY DISCONNECT: ACD-3 (REDUNDANT) 1200A, 240V, 3P, AC DISCONNECT, FUSIBLE, NEMA 3R. PV SYSTEM UTILITY DISCONNECT LOCATED NEAR POCC. EATON/CUTLER HAMMER DH328NRK.
G	SUNEDISON PRODUCTION METERS: MET-1 & MET-2

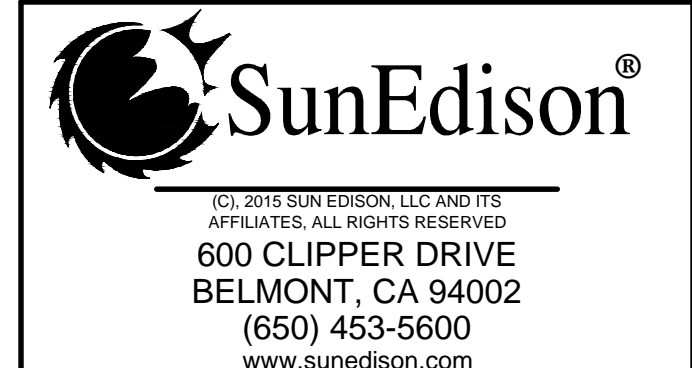
EQUIPMENT SCHEDULE - KEYNOTES (CONT.)	
H	EXISTING BATTERY SYSTEM DISCONNECT SWITCH: 200A, 13.8kV, 3P, FUSIBLE, LOAD BREAK. SQUARE D HVL (MODEL # 44035-154-50)

PV SYSTEM INTERCONNECTION

LOAD SIDE:
LOAD SIDE INTERCONNECTION TO BE PERFORMED AT END OF BUSSING FARTHEST FROM MAIN OCPD UNLESS OTHERWISE NOTED. ALL CIRCUIT BREAKERS UPSTREAM OF INVERTERS SHALL BE RATED FOR REVERSE FEED OPERATION. GROUND-FAULT PROTECTION IF PRESENT MUST BE COMPATIBLE WITH REVERSE-FEED OPERATION. CONDUCTOR ROUTING, TERMINATION HARDWARE, AND SHUT-DOWN PROCEDURE SHALL BE SUBMITTED TO SUNEDISON FOR REVIEW/APPROVAL PRIOR TO INSTALLATION. INTERCONNECTION SHALL BE COMPLIANT WITH NEC 705.12(D).

LEGEND:

(N) SEE SHEET E-301 FOR CONDUCTOR TYPE & RACEWAY INFORMATION.



STAMP:

COLLEGE OF MARIN
KENTFIELD CAMPUS
PHOTOVOLTAIC SYSTEM

55 LAUREL WAY
KENTFIELD, CALIFORNIA 94904

PROJECT NUMBER:
CA-16-0162

SHEET TITLE:
SINGLE-LINE DIAGRAM

SHEET SIZE:
ARCH "D"
24" X 36" (610 x 914)

THIS DRAWING IS THE PROPERTY OF SUNEDISON, LLC. THIS INFORMATION IS CONFIDENTIAL AND IS TO BE USED ONLY IN CONNECTION WITH WORK DESCRIBED BY SUNEDISON, LLC. NO PART IS TO BE DISCLOSED TO OTHERS WITHOUT WRITTEN PERMISSION FROM SUNEDISON, LLC.

NO.	REVISION	DATE	INIT.

DSA IDENTIFICATION STAMP:

DATE:	01-25-2017
DRAWN BY:	DRM
ENGINEER:	[XXX]
APPROVED BY:	AF

PROJECT PHASE:
INITIAL DESIGN

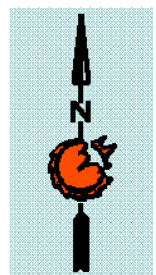
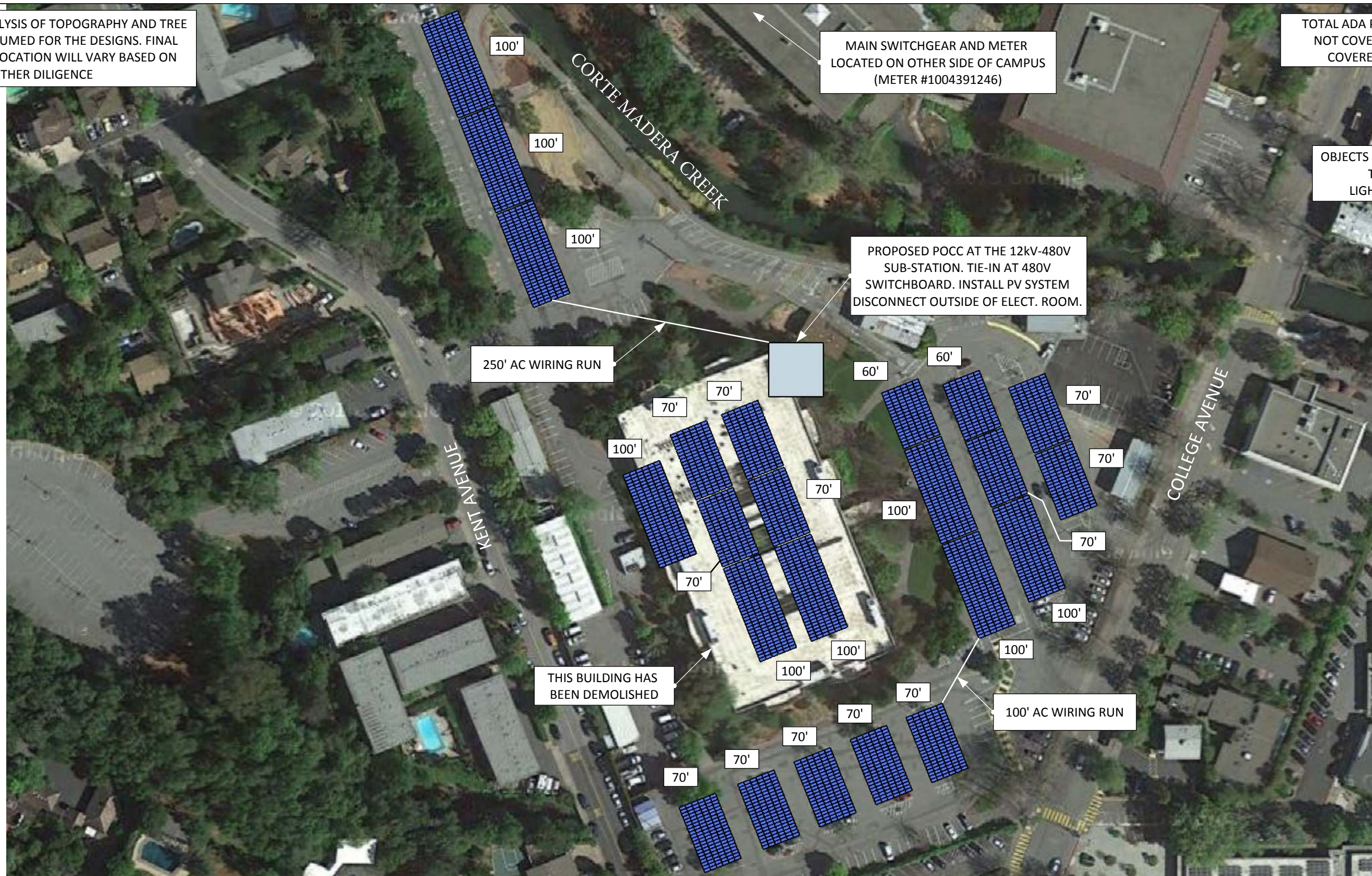
SCALE:
NTS


SHEET NO.:
E-201

NOTE: DESKTOP ANALYSIS OF TOPOGRAPHY AND TREE HEIGHTS WERE ASSUMED FOR THE DESIGNS. FINAL SYSTEM SIZE AND LOCATION WILL VARY BASED ON FURTHER DILIGENCE

TOTAL ADA PARKING SPACES: 24
NOT COVERED BY ARRAY: 13
COVERED BY ARRAY: 11

OBJECTS TO BE REMOVED:
TREES: 55
LIGHT POLES: 27



PROJECT DETAIL		SYSTEM DESCRIPTION			SHEET INFORMATION		
 <p>600 Clipper Drive Belmont, CA 94002 (888)-SUNEDISON (888-786-3347)</p> <p>(c) 2014 SUNEDISON, LLC AND ITS AFFILIATES, ALL RIGHT RESERVED</p>	PROJECT#: CA-16-0162	LAT/LONG: 37.953, -122.550	MODULE TYPE: SUNEDISON F335EZD-3Y	TILT ANGLE: 7°	AZIMUTH: 248°	DATE: 01/25/17	
	SITE NAME: COLLEGE OF MARIN - KENTFIELD CAMPUS ADDRESS: 55 LAUREL WAY, KENTFIELD, CA 94904		MODULE QUANTITY: 4,248	RACKING STRUCTURE: AISLE CANOPY (CANOPY T)		DESIGNER: CRG	SHEET NO: CL-1
			SYSTEM SIZE (DC): 1,432.08kW	INVERTER: 19x SUNGROW SG60KU-M (480V) & 1x SUNGROW SG36KU (480V)		SCALE: 1" = 100'	
		SYSTEM SIZE (AC): 1.176MW					

** THIS DRAWING IS THE PROPERTY OF SUNEDISON,LLC. THIS INFORMATION IS CONFIDENTIAL AND IS TO BE USED ONLY IN CONNECTION WITH WORK DESCRIBED BY SUNEDISON,LLC. NO PART IS TO BE DISCLOSED TO OTHERS WITHOUT WRITTEN PERMISSION FROM SUNEDISON,LLC. PRELIMINARY DESIGN NOT FOR CONSTRUCTION